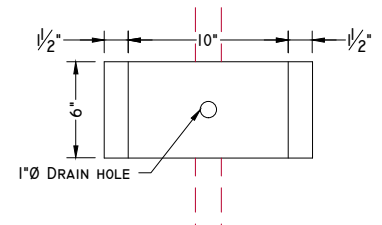
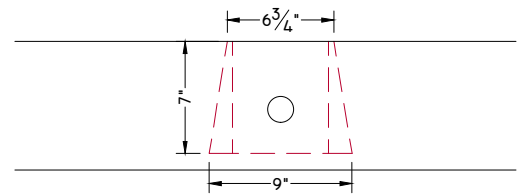
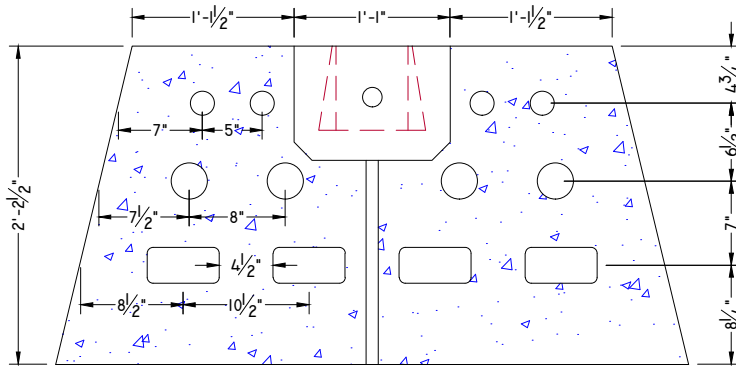


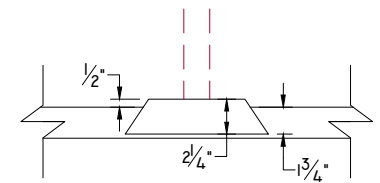
**HITCH ROD POCKET ELEVATION**  
SCALE: 1" = 1'-0"



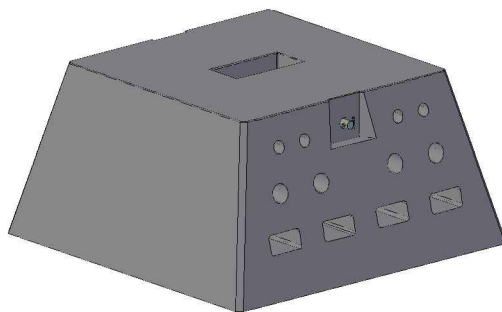
**HITCH ROD POCKET PLAN VIEW**  
SCALE: 1" = 1'-0"



**SIDE POCKET ELEVATION**  
SCALE: 1" = 1'-0"



**SIDE POCKET PLAN VIEW**  
SCALE: 1" = 1'-0"



**CONCEPTUAL VIEW - NTS**

**Manufacturing Notes**

- 1.1. CONCRETE COMPRESSIVE STRENGTH: 5000PSI
- 1.2. AIR ENTRAINMENT: 4-6%
- 1.3. GRADE 60 REINFORCEMENT
- 1.4. STRUCTURAL FIBER REINFORCEMENT

**Physical Specifications:**

ACTUAL DRY WEIGHT: 4,440 LBS  
BUOANCY WEIGHT: 2,590 LBS

