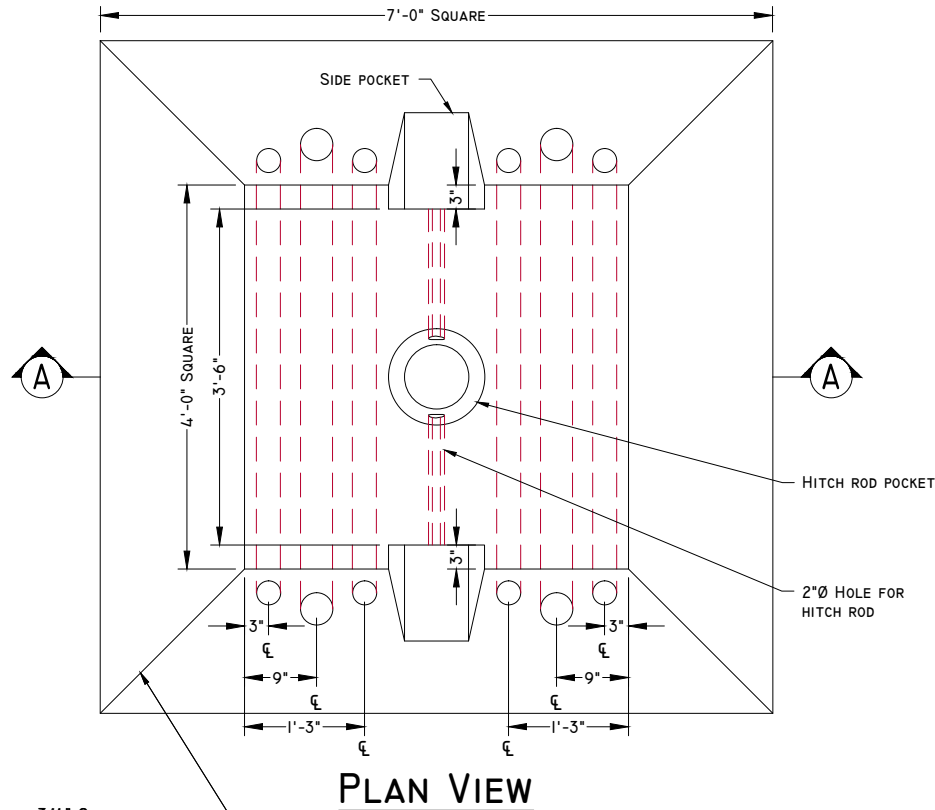
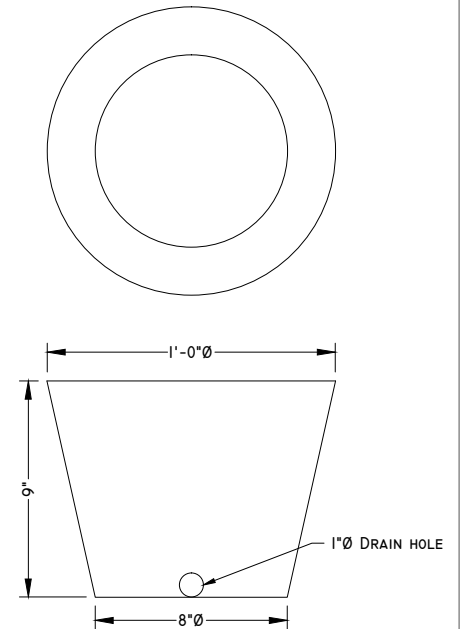


## HITCH ROD POCKET DETAIL

SCALE: 1 1/2" = 1'-0"

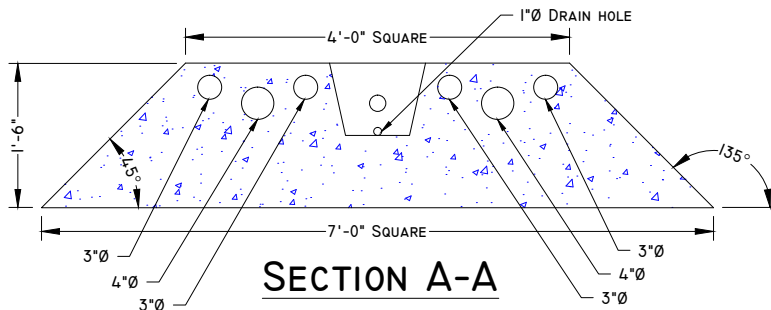
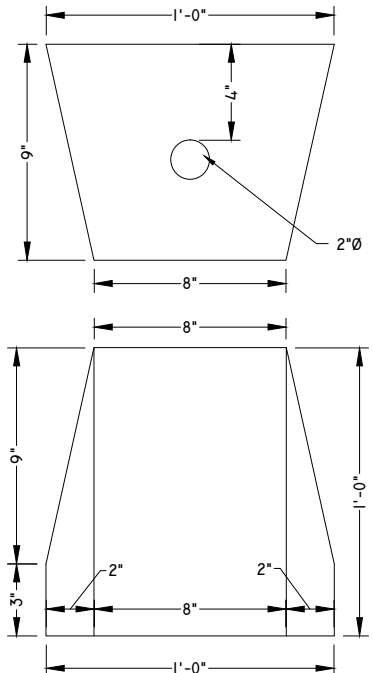


NOTE: 3/4" CHAMFER TYPICAL ON ALL EDGES EXCEPT TOP OF POCKET, SIDES AND BOTTOM

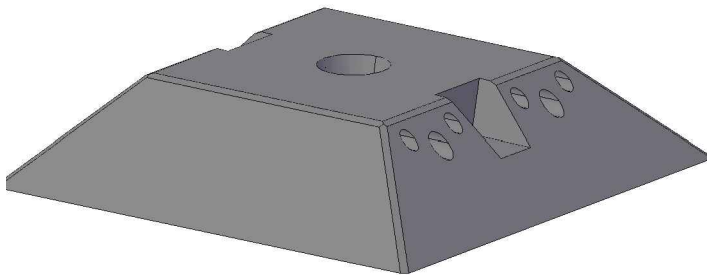
## PLAN VIEW

## SIDE POCKET DETAIL

SCALE: 1 1/2" = 1'-0"



## SECTION A-A



## CONCEPTUAL VIEW - NTS

### Manufacturing Notes

- 1.1. CONCRETE COMPRESSIVE STRENGTH: 5000PSI
- 1.2. AIR ENTRAINMENT: 4-6%
- 1.3. GRADE 60 REINFORCEMENT
- 1.4. STRUCTURAL FIBER REINFORCEMENT

### Physical Specifications:

ACTUAL DRY WEIGHT: 6,530 LBS  
 BUOANCY WEIGHT: 3,815 LBS